

APPA informal guidance:

By Kinga (Delegate in Primary) & Caroline (APPA Fondamental)

Road alternatives during road constructions around the school

Proposing three alternatives

1

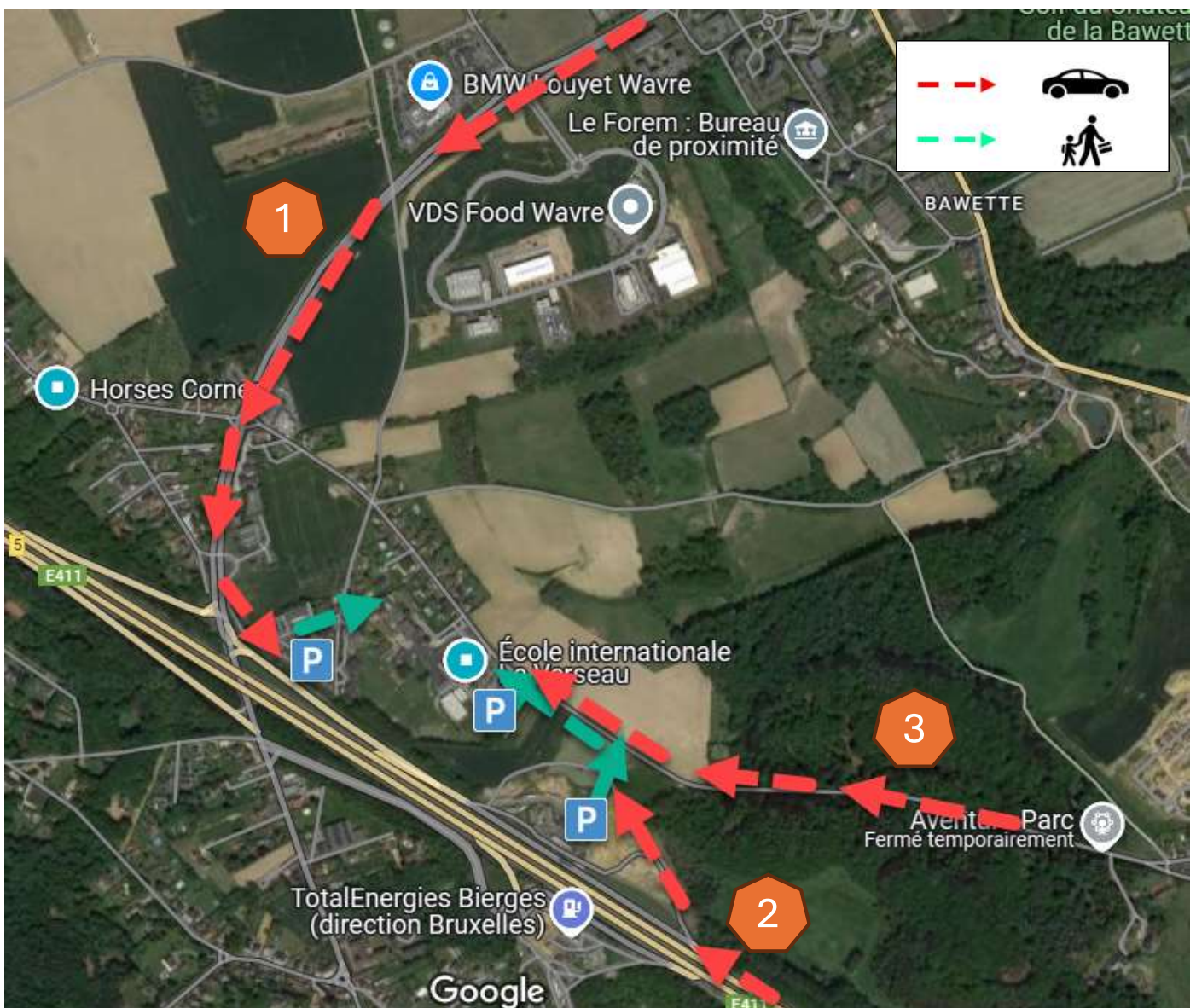
For those arriving from the E411 highway or via N257 Chaussée Des Collines, **park at Krefel/Trafic, walk on the pedestrian path and enter via the maternelle gate.**

2

For those arriving from the E411 highway south, **park on service station and walk to the secondary doors**

3

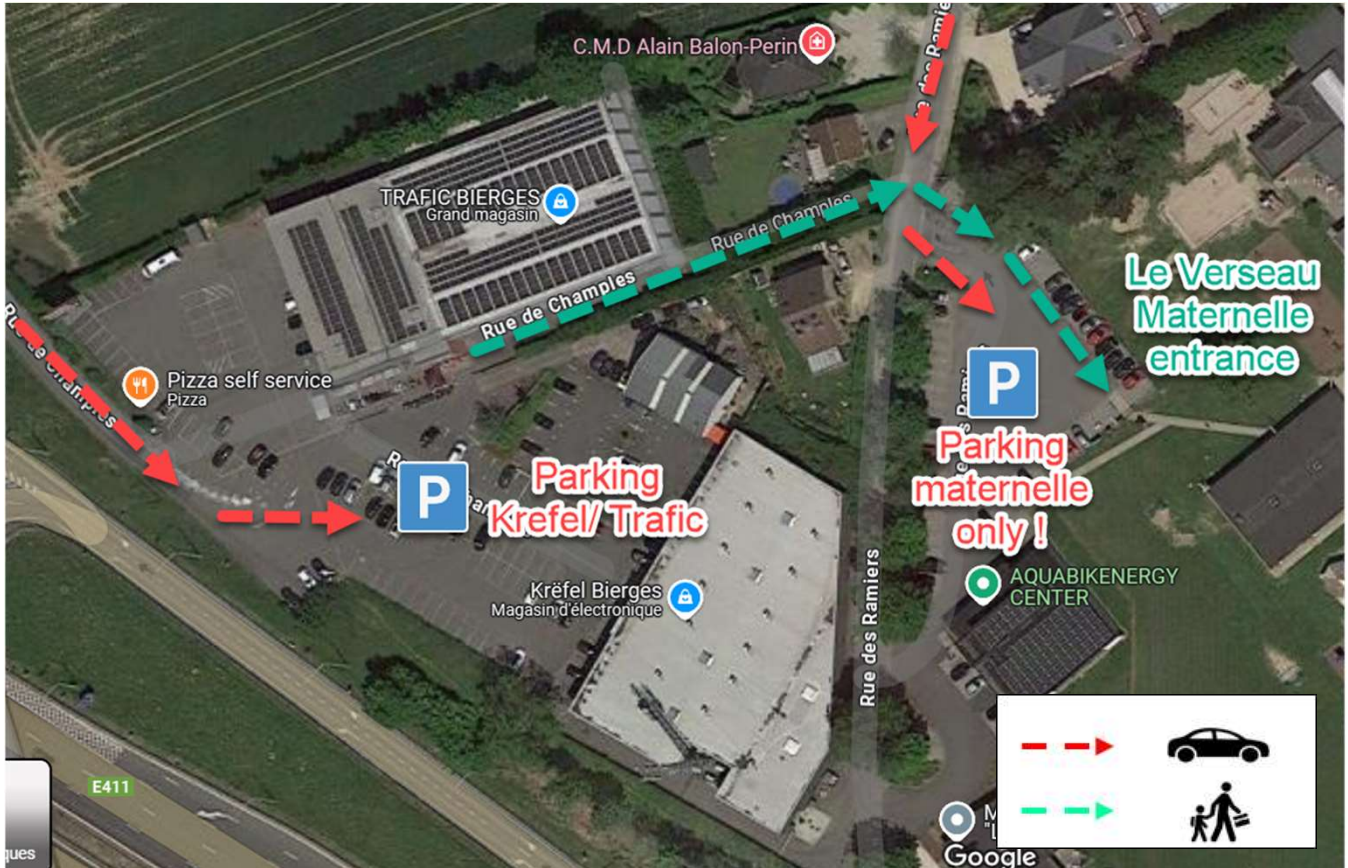
For those arriving through Wavre via the Bois de Beaumont (Rue Sainte-Anne / Rue de Wavre), **park on secondaire parking and enter via the secondary doors**





Krefel/ Trafic parking and entering via maternelle gate

Overview



Key details:

- The maternelle parking is reserved for families with younger kids, other families should park at Krefel/Trafic
- **The access through maternelle gate is authorized exceptionally for secondary students during the road works**
- The maternelle gate is opened during the following windows:

Day	Morning	Afternoon
Mon, Tue, Thu		16h-16h30
Wed	8h-8h45	12h-12h30
Fri		15h-15h30



Krefel/ Trafic parking and entering via maternelle gate

Detailed explanation

1. Arrival from E411

or arrival from N257



2. Park on Trafic / Krefel lot and follow pedestrian path



3. Cross Rue des Ramiers and access the school by the maternelle gate



2

Service station parking and entering via the secondary doors

Overview



Key details:

- Road works are on-going between Rue de Wavre and the service station (1st green arrow above), we leave to the appreciation of each family whether they want to use this path

2

Service station parking and entering via the secondary doors

Detailed explanation

1. Arrival from the south on E411, stay on the right lane to access the highway service station Total Energies



2. Follow the Parking signs and park on the parking lot behind the Total Energies station



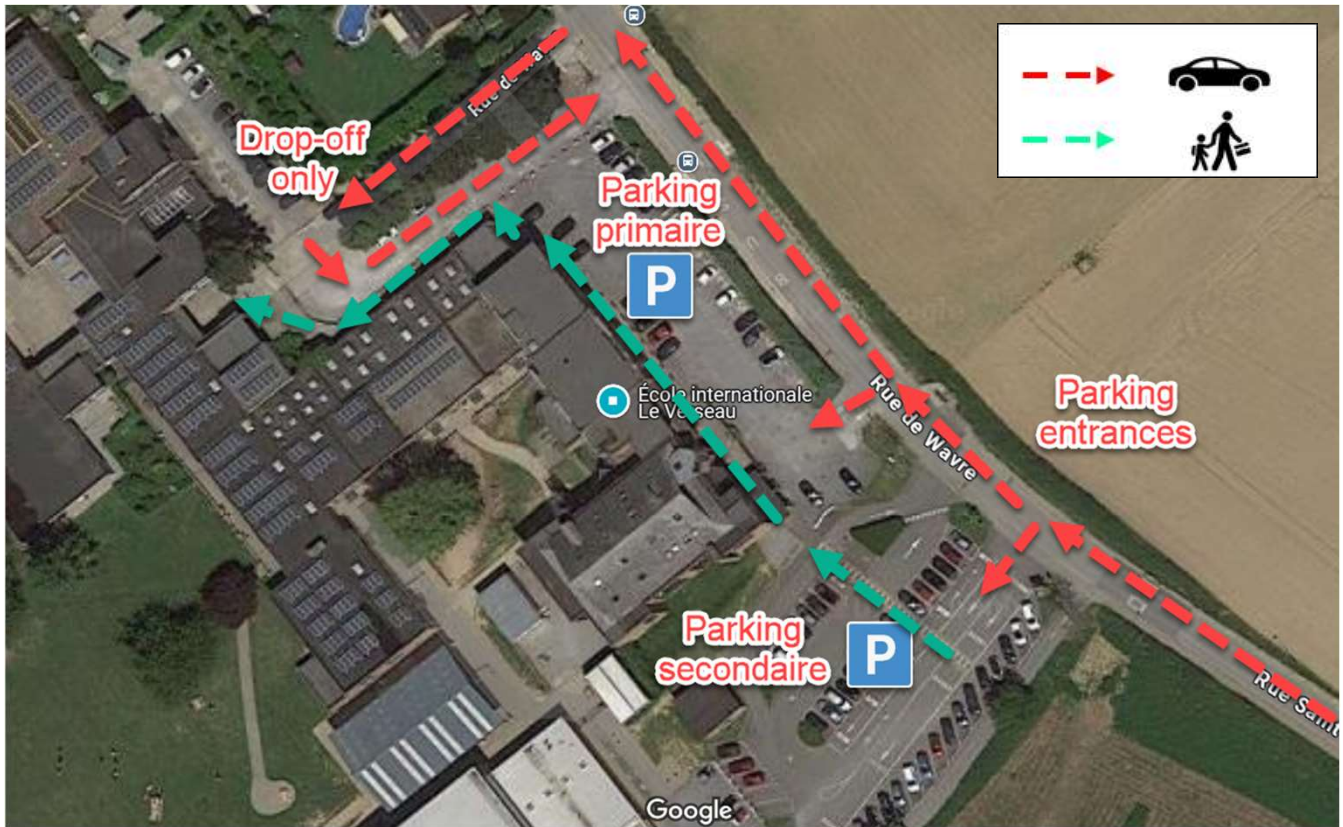
3. Follow the path to rue de Wavre and turn left in direction of the school



3

Secondaire parking and entering via secondary doors

Overview



Key details:

- Please use the appropriate parking as much as feasible, and be mindful of children around the drop-off area

3

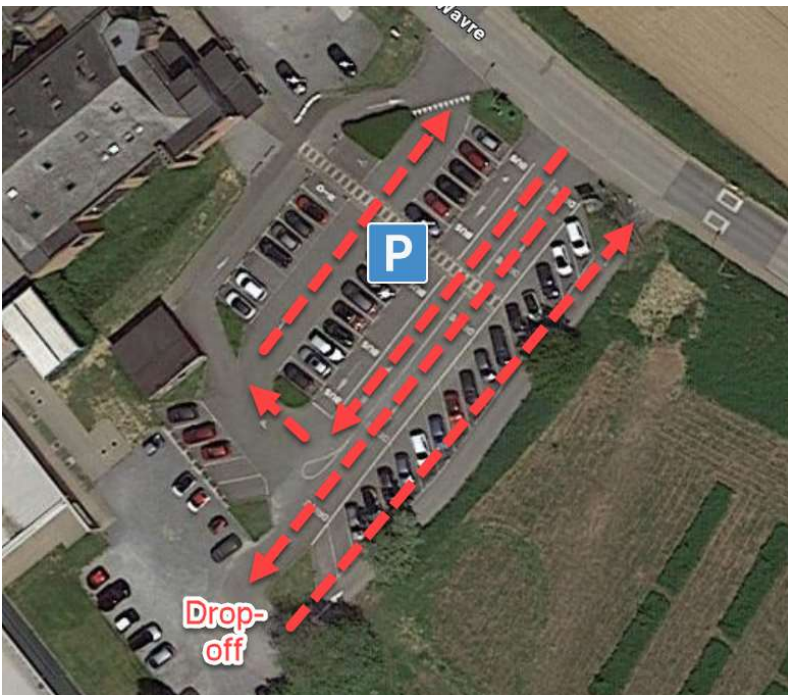
Secondaire parking and entering via secondary doors

Detailed explanation

1. Arrival from Rue de Wavre / Rue Sainte-Anne



2. Enter in the parking, or drop-off lane:



Sky view of the drop-off vs secondary parking lot

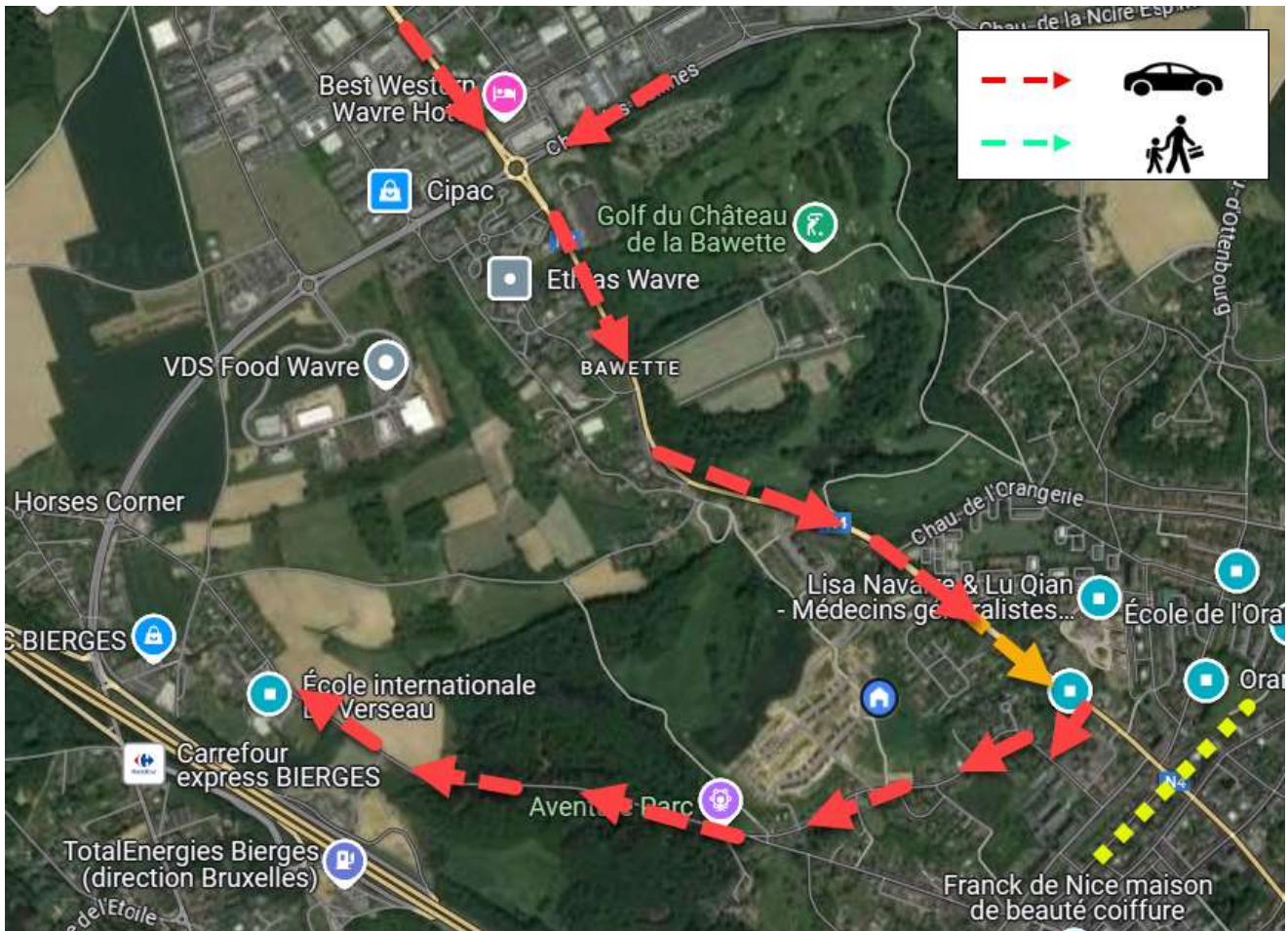
View from the road



3

Secondaire parking and entering via secondary doors

Optional detour for those arriving from N257
Chaussée Des Collines



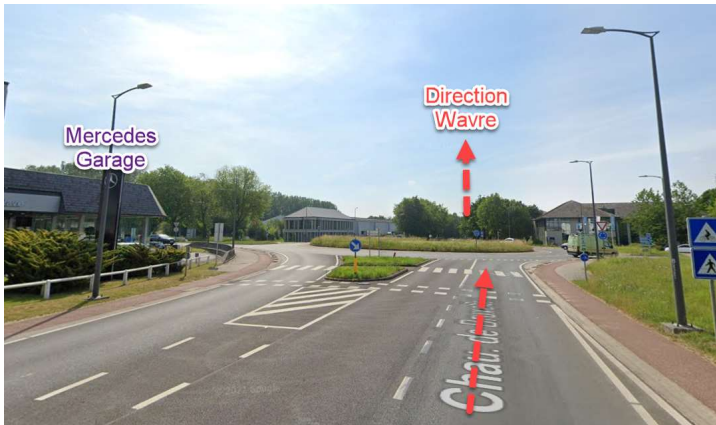
From the roundabout between Chaussée de Bruxelles and Chaussée des Collines, head towards Wavre, and turn before the train tracks, following “Aventure Parc” signs. You will arrive by the primaire/secondaire entrance of the school.

3

Secondaire parking and entering via secondary doors

Optional detour detailed explanation

1. From the Mercedes roundabout, go towards Wavre



2. Continue straight on N4 Chaussée de Bruxelles and turn on Avenue des Mésanges (follow sign for Aventure Parc) – shortly before the train crossing:



3. Turn on Avenue Henri Lepage (follow sign for Aventure Parc), and continue straight until you see the school on the left (Cf.p4-5)

